

Proper Kefalonian Travel

M/Y Diamond, Colvic Sun Cruiser 36



Small and fast, ideal for the adventurous

Deck Equipment

Electric Anchor, Wind Glass, Cockpit Speakers, Dinghy out board with 15HP motor
Pushpin Furniture, Outdoor Spotlight, Boarding Bridge, Storage Space

Electronic Equipment

Two VHF's, Speedometer, Autopilot, Radar, GPS, Radio, TV
Inverter 12V DC to 220V AC, Depth Meter

Standard Equipment

Electric Fridge, Fridge Freeze, Ice Maker, Microwave, Electric Hobes, Water Tank
450LT, Electric Boiler, Hot Water, Electric Vacuum Toilets, Generator 220V - 3.5
K.V.A.

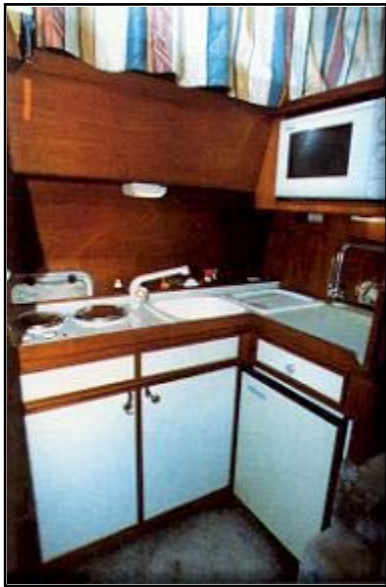
General Specifications

L.O.A. 11.70 m	Beam 3.90 m
Draft 1 m	Engine 2 x 200HP
Fuel 700 LT	Water 450 LT
Generator 3.5 K.V.A.	RPM 3,800
Consumption 70LT/H	Cruising Speed 22 Knots - 3,500 RPM
Cabins 2	Toilets 2
Showers 2	Total Persons 4-6

Year Built 1987



Proper Kefalonian Travel



The kitchen



The back balcony



The bridge



The main salon



The small bedroom



The big bedroom